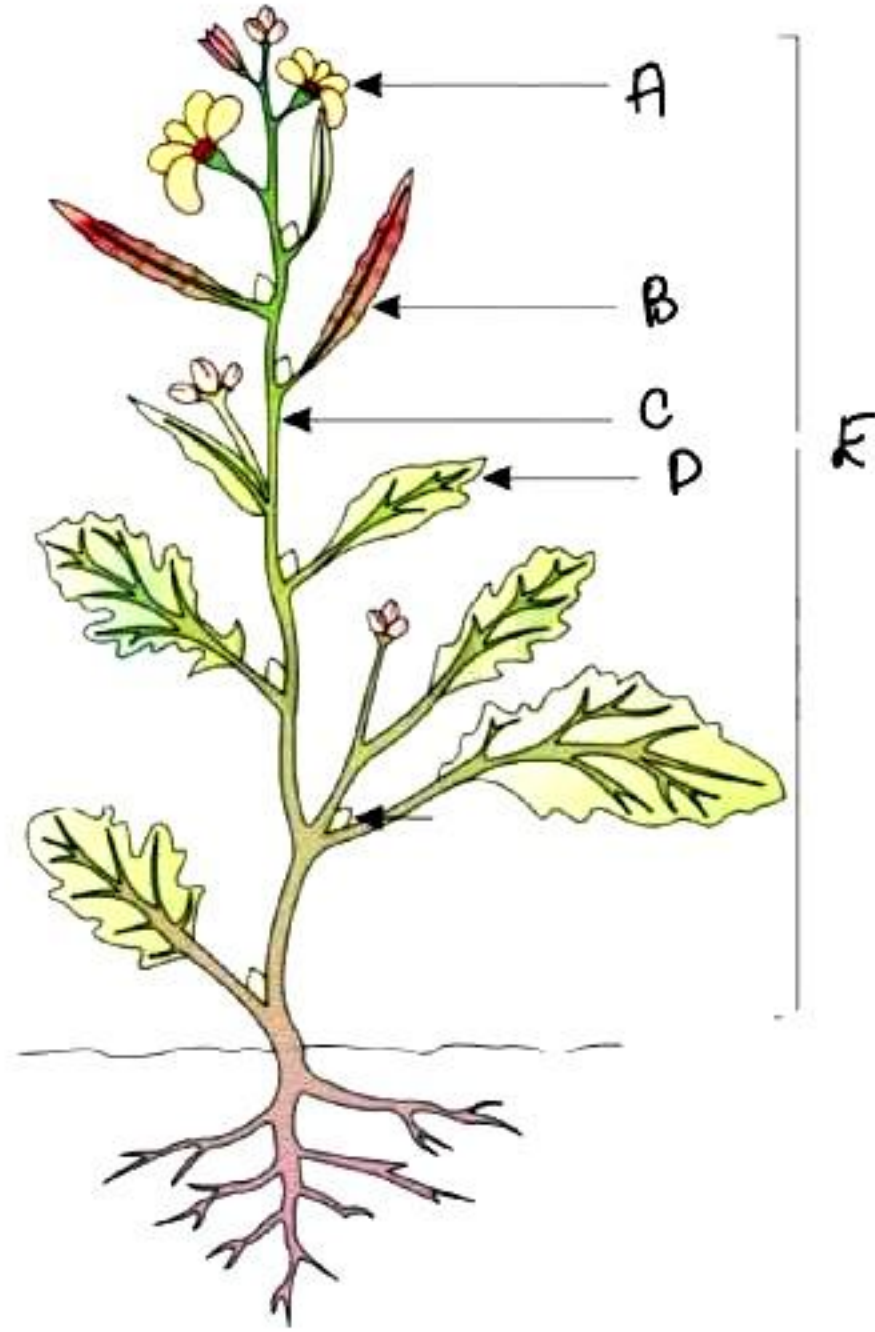


Morphology of Flowering Plants

Set – 1

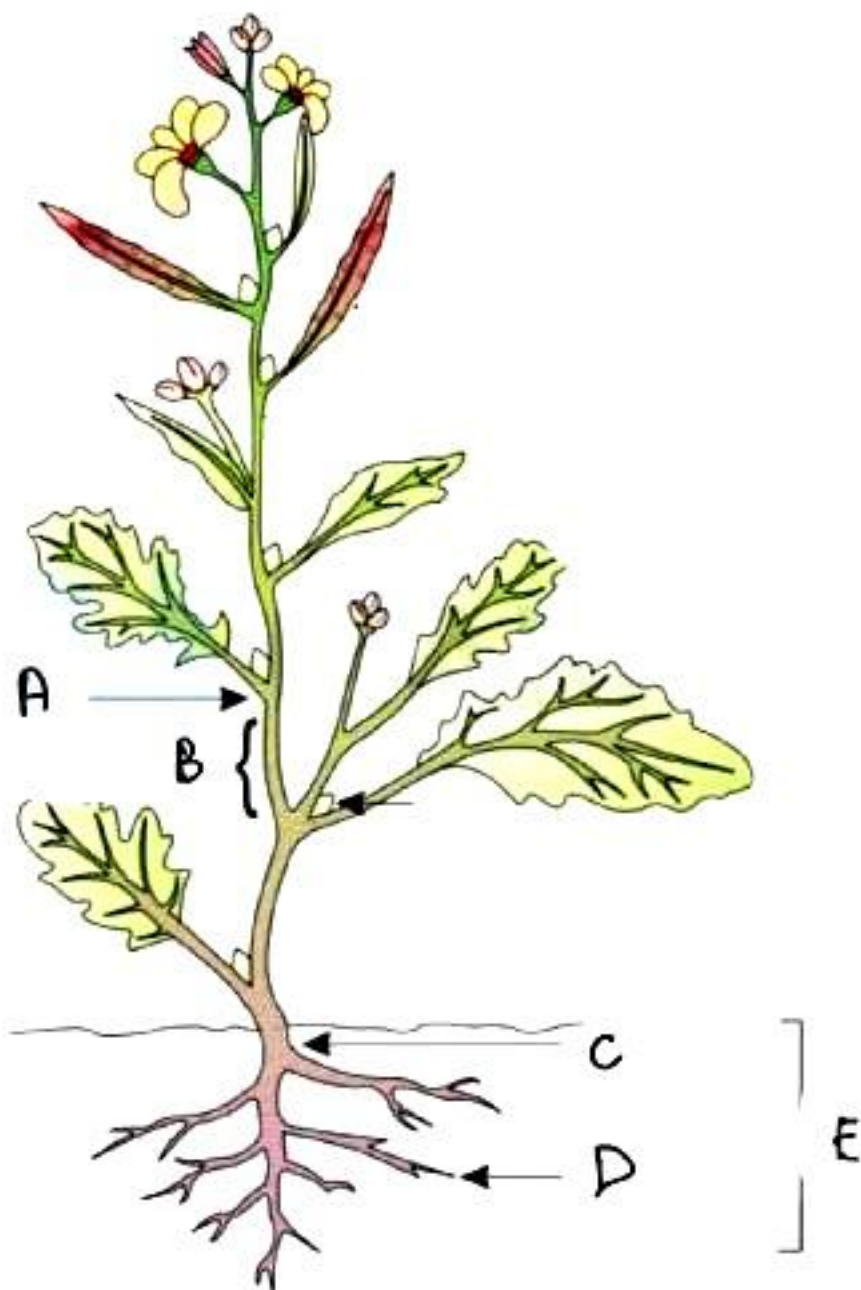
Q1. Select A, B, C, D from the following diagram



- A. Flower, Fruit, Stem, Leaf, Root system
- B. Flower, Fruit, Stem, Leaf, Shoot System
- C. Fruit, Flower, Stem, Leaf, Shoot System
- D. Fruit, Flower, Stem, Leaf, Root system

Ans. (B)

Q2. Select A, B, C, D and E from the following diagram



- A. Node, Internode, Primary Root, Secondary Root, Root System
- B. Internode, Node, Primary Root, Secondary Root, Root System
- C. Internode, Node, Primary Root, Secondary Root, Shoot System
- D. None of the above

Ans. (A)

Q3. Select the name of the type of root present in the following figure.



- A. Tap Root
- B. Fibrous Root
- C. Adventitious Root
- D. None of the above

Ans. (A)

Q4. Select the name of the type of root present in the following figure.



Ans. (B)

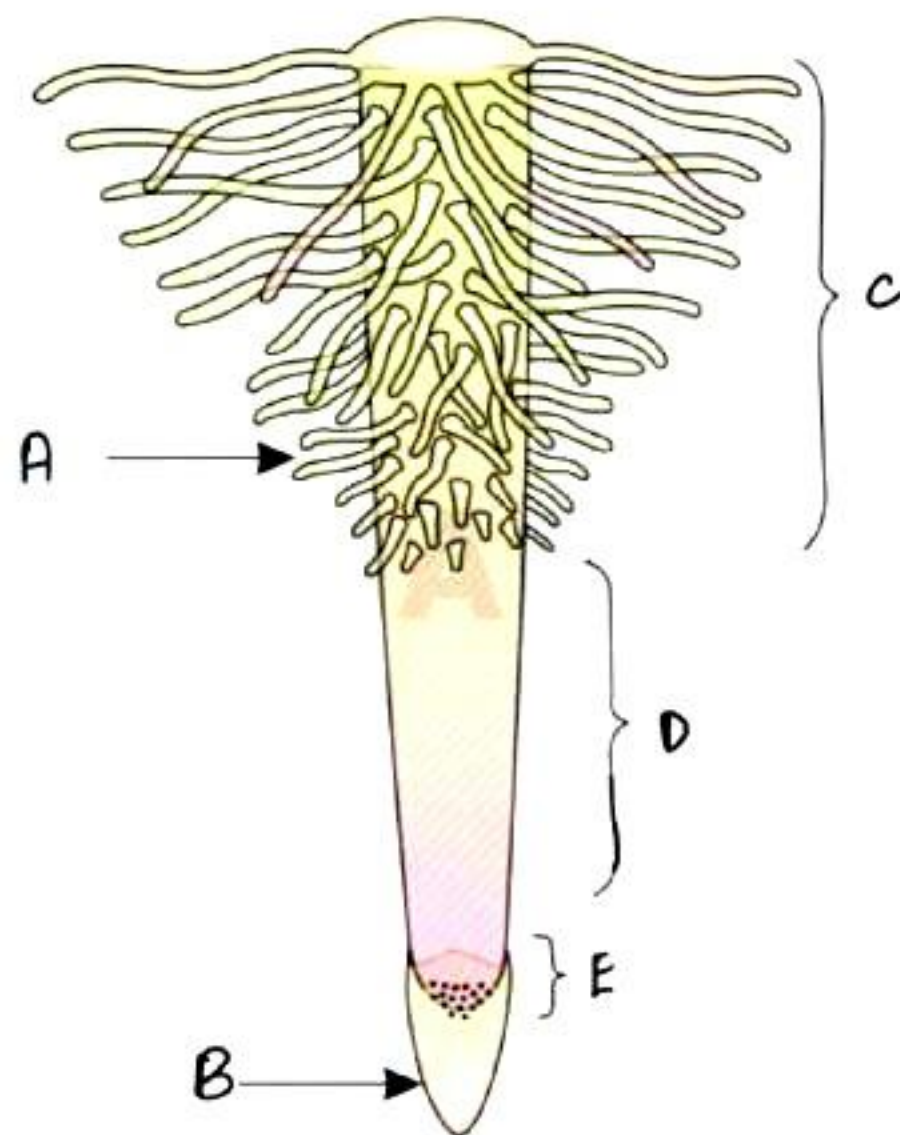
Q5. Select the name of the type of root present in the following figure.



- A. Tap Root
- B. Fibrous Root
- C. Adventitious Root
- D. None of the above

Ans. (C)

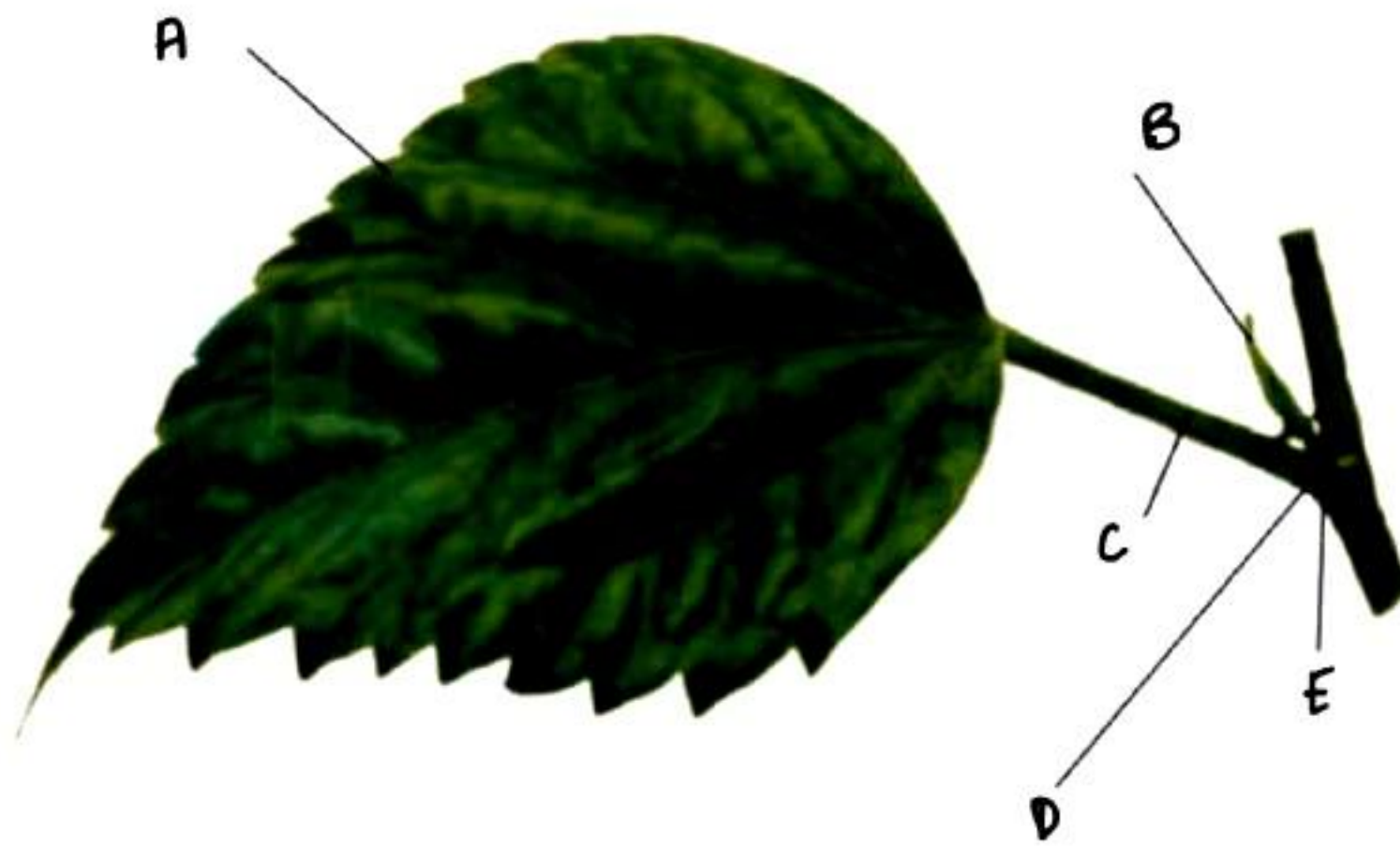
Q6. Select A, B, C, D and E from the following diagram



- A. Root Hair, Root Cap, Region of Elongation, Region of Meristem, Region of maturation
- B. Root Hair, Root Cap, Region of Meristem, Region of Elongation, Region of maturation
- C. Root Hair, Root Cap, Region of Meristem, Region of Elongation, Region of growth
- D. Root Hair, Root Cap, Region of Maturation, Region of Elongation, Region of meristematic activity

Ans. (D)

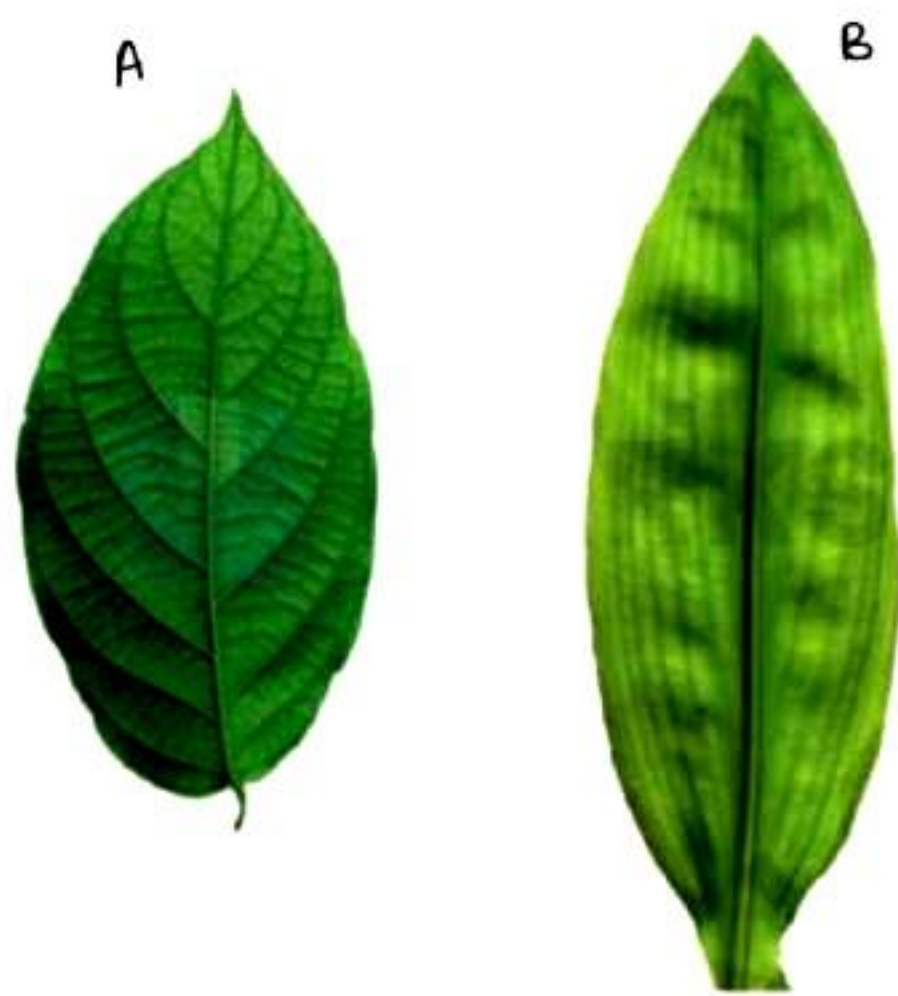
Q7. Select A, B, C, D and E from the following diagram



- A. Lamina, Stipule, Petiole, Leaf blade, Axillary bud
- B. Lamina, Stipule, Petiole, Leaf blade, Apical bud
- C. Lamina, Stipule, Petiole, Leaf base, Axillary bud
- D. Lamina, Stipule, Petiole, Leaf base, Apical bud

Ans. (C)

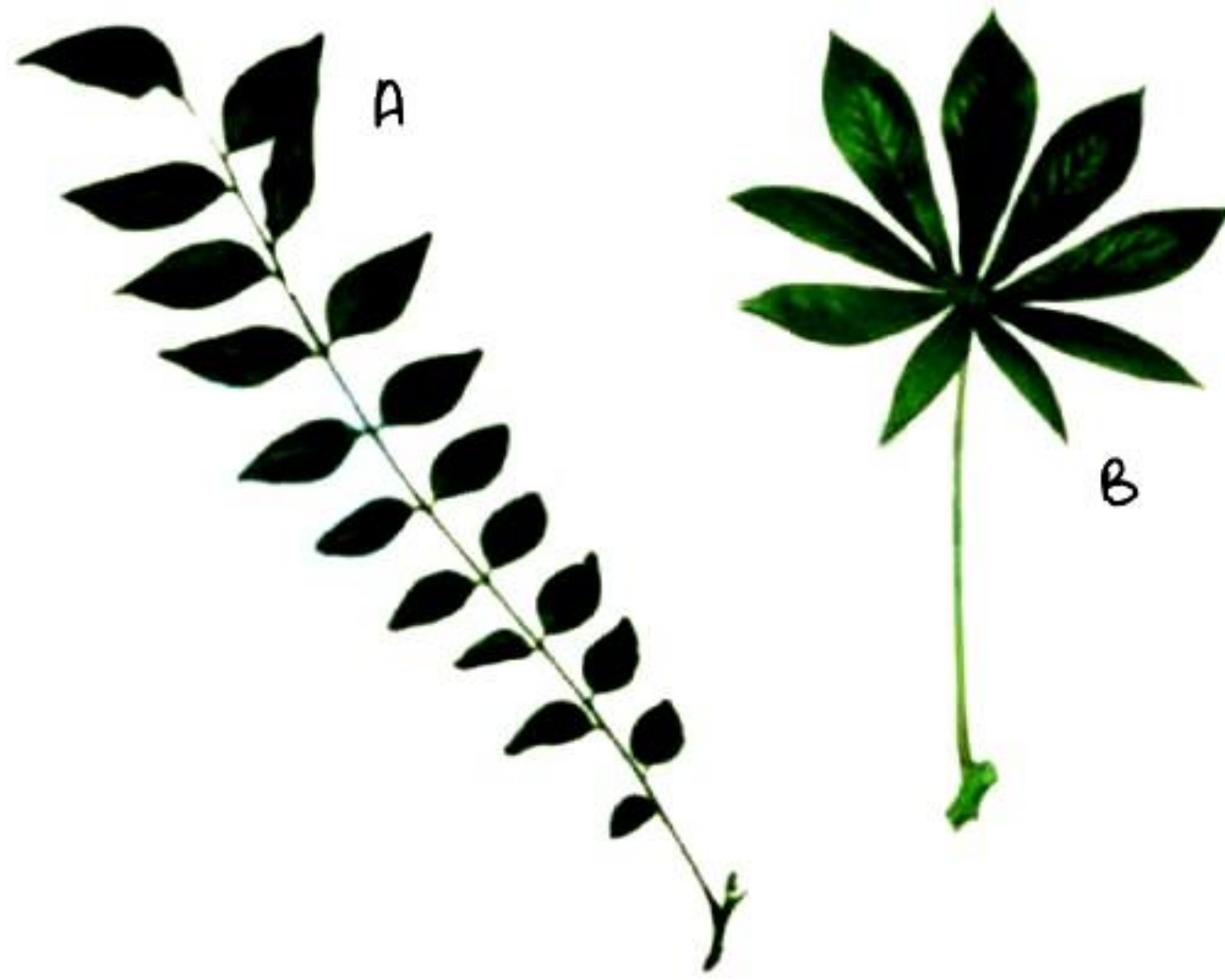
Q8. Select A and B from the following diagram



- A. Reticulate venation, Parallel Venation
- B. Both have Parallel Venation
- C. Parallel Venation, Reticulate Venation
- D. Both have Reticulate venation

Ans. (A)

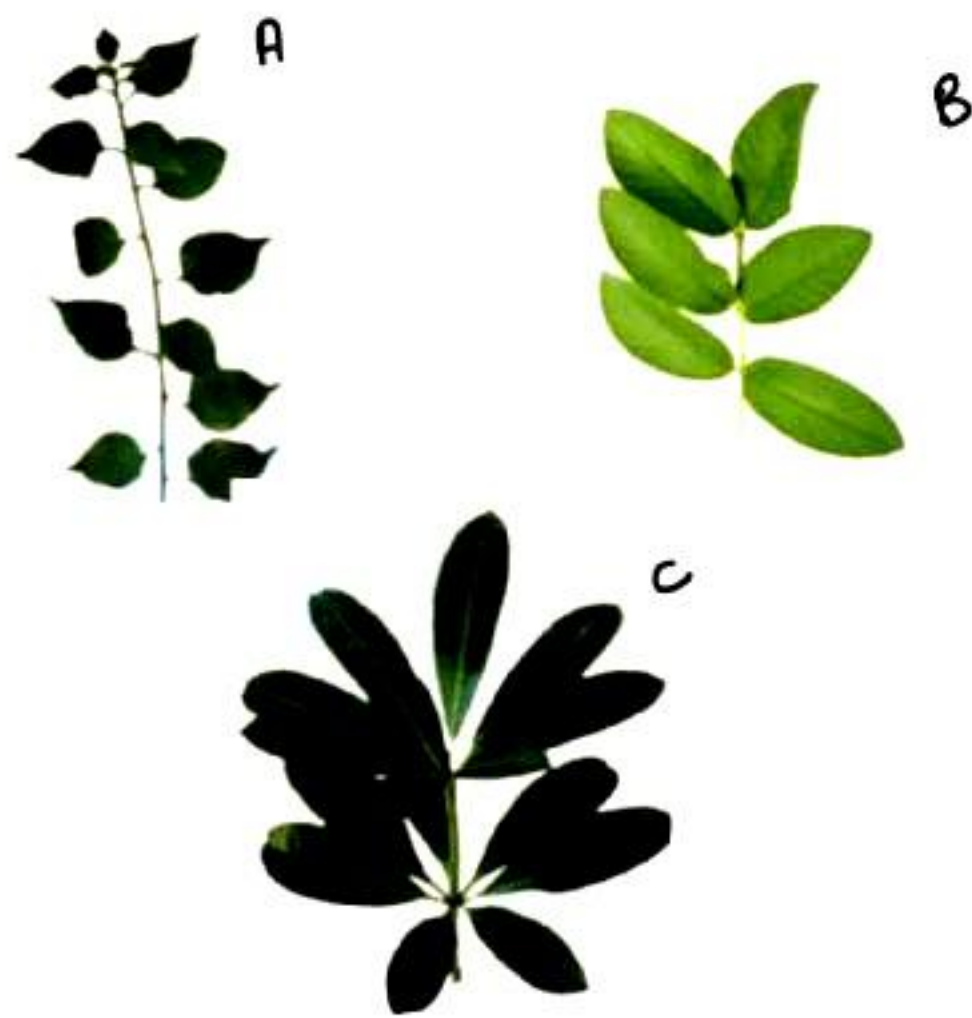
Q9. Select A and B from the following diagram



- A. Guava, Cotton
- B. Neem, Silk cotton
- C. Guava, Calotropis
- D. Neem, Calotropis

Ans. (B)

Q10. Select A, B, C from the following diagram



- A. Guava, China Rose, Calotropis
- B. Guava, China Rose, Silk Cotton
- C. China Rose, Guava, Silk Cotton
- D. China Rose, Guava, Alstonia

Ans. (D)

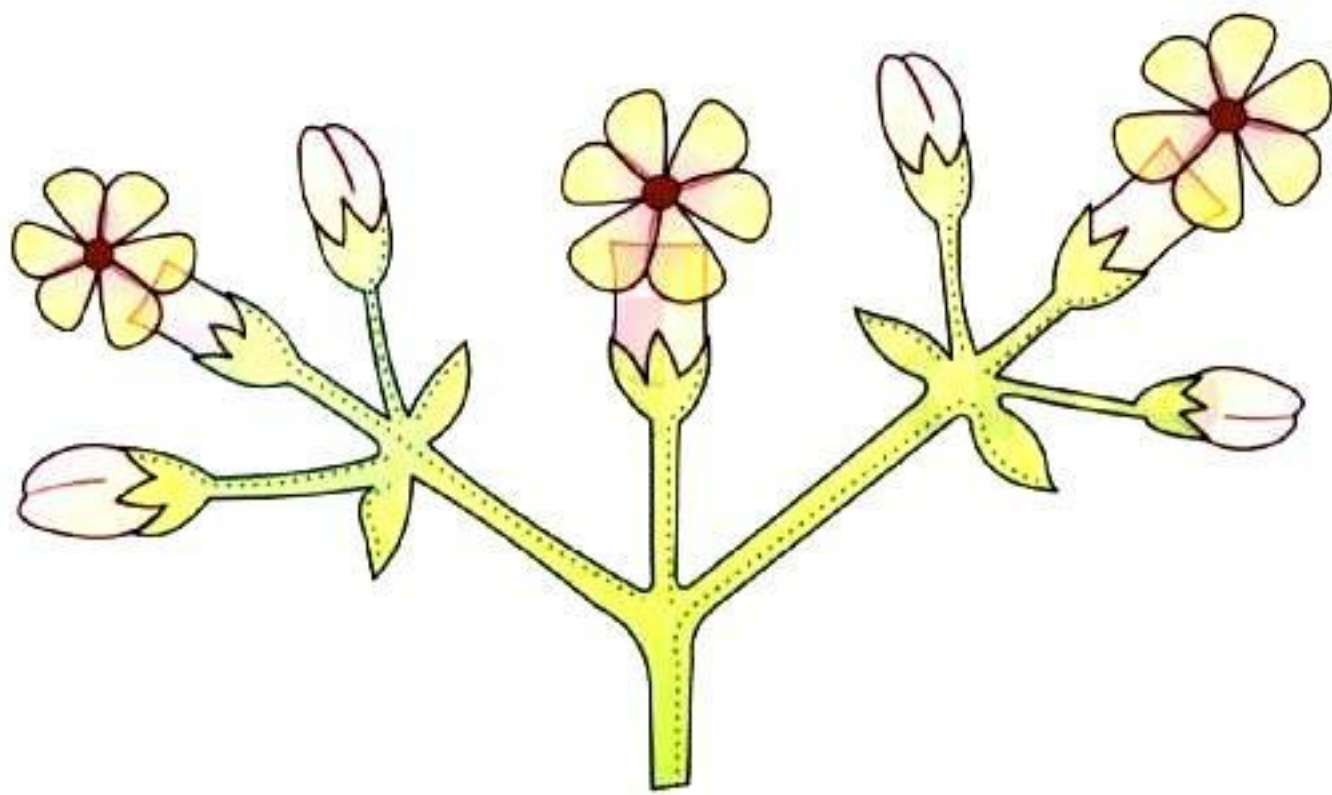
Q11. Identify the diagram.



- A. Guava Tree
- B. Racemose inflorescence
- C. Cymose inflorescence
- D. China Rose

Ans. (B)

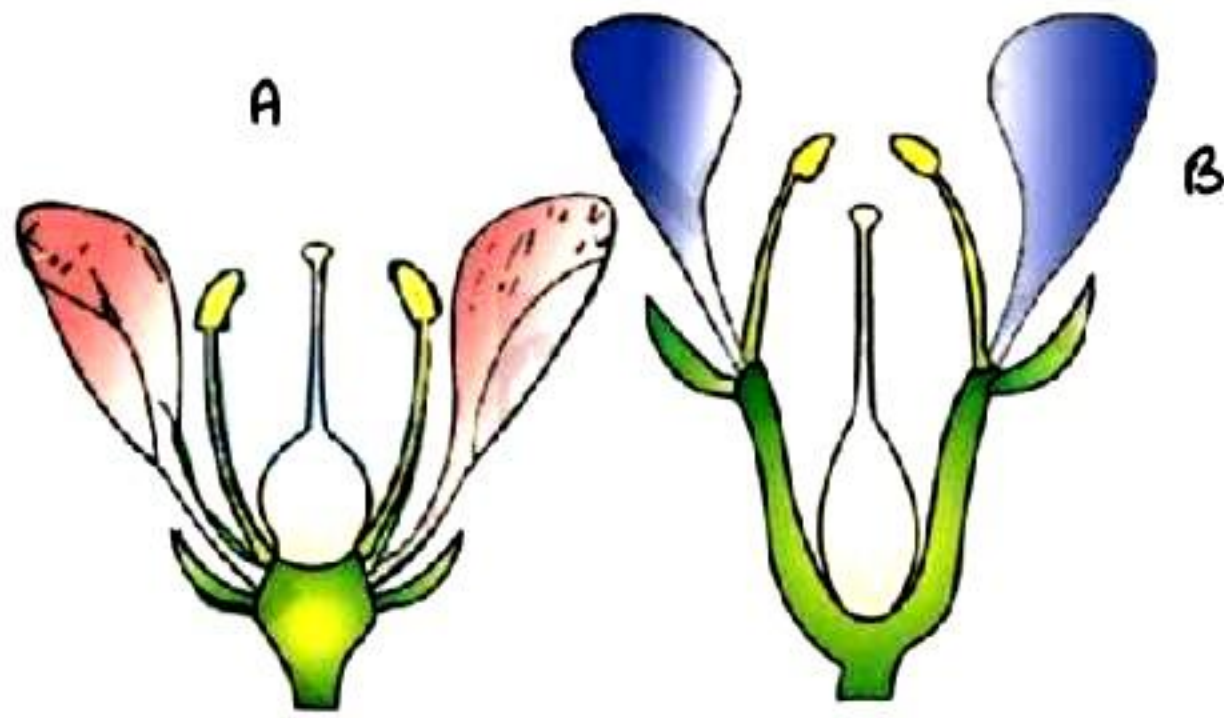
Q12. Identify the diagram.



- A. Guava Tree
- B. Racemose inflorescence
- C. Cymose inflorescence
- D. China Rose

Ans. (C)

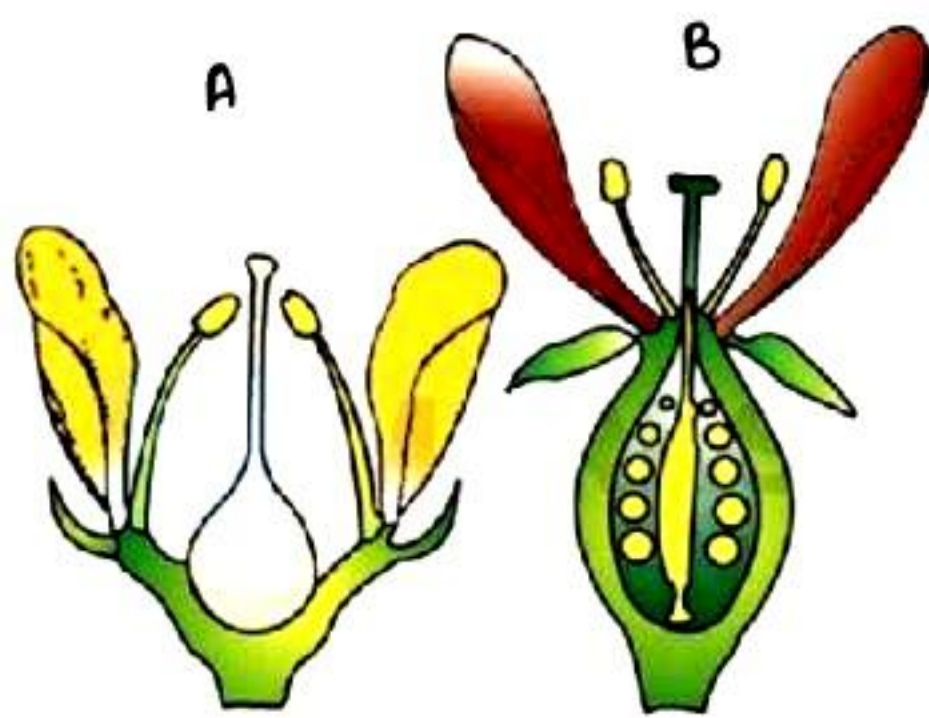
Q13. Select A and B from the following diagram



- A. Hypogynous and Perigynous
- B. Perigynous and Epigynous
- C. Epigynous and Hypogynous
- D. Hypogynous and Perigynous

Ans. (A)

Q14. Select A and B from the following diagram



- A. Hypogynous and Perigynous
- B. Perigynous and Epigynous
- C. Epigynous and Hypogynous
- D. Hypogynous and Perigynous

Ans. (B)

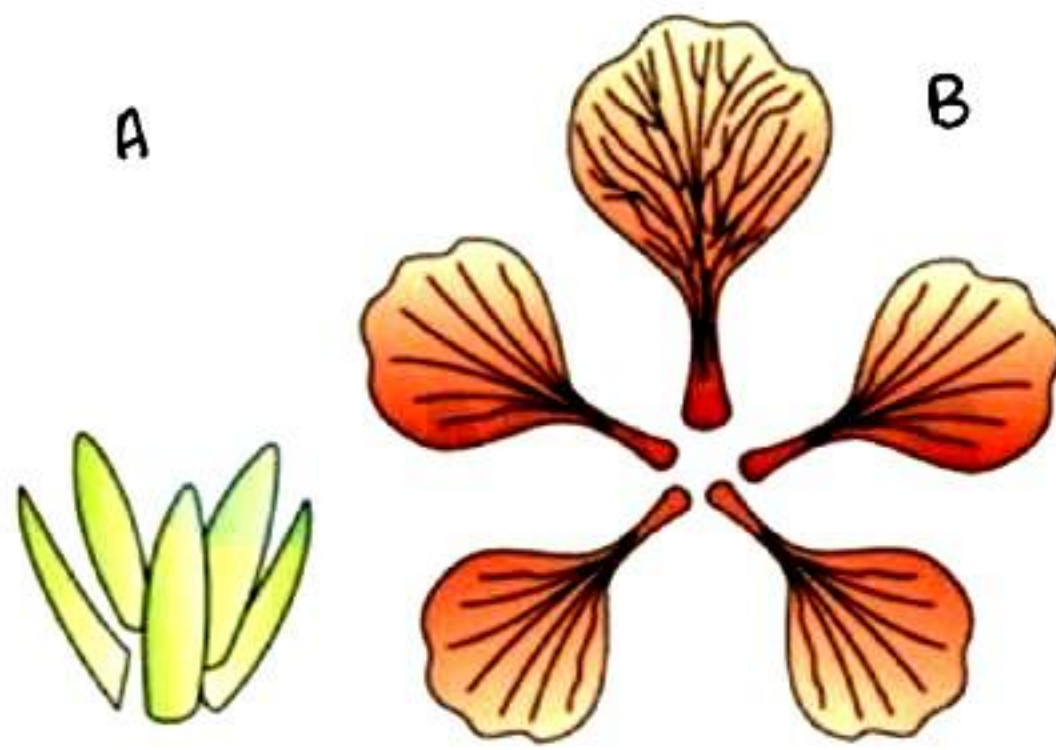
Q15. Select A, B, C, D and E from the following diagram



- A. Androecium, Gynoecium, Corolla, Calyx, Pedicel
- B. Gynoecium, Androecium, Corolla, Calyx, Pedicel
- C. Gynoecium, Corolla, Calyx, Pedicel, Androecium
- D. Androecium, Gynoecium, Corolla, Calyx, Peduncle

Ans. (A)

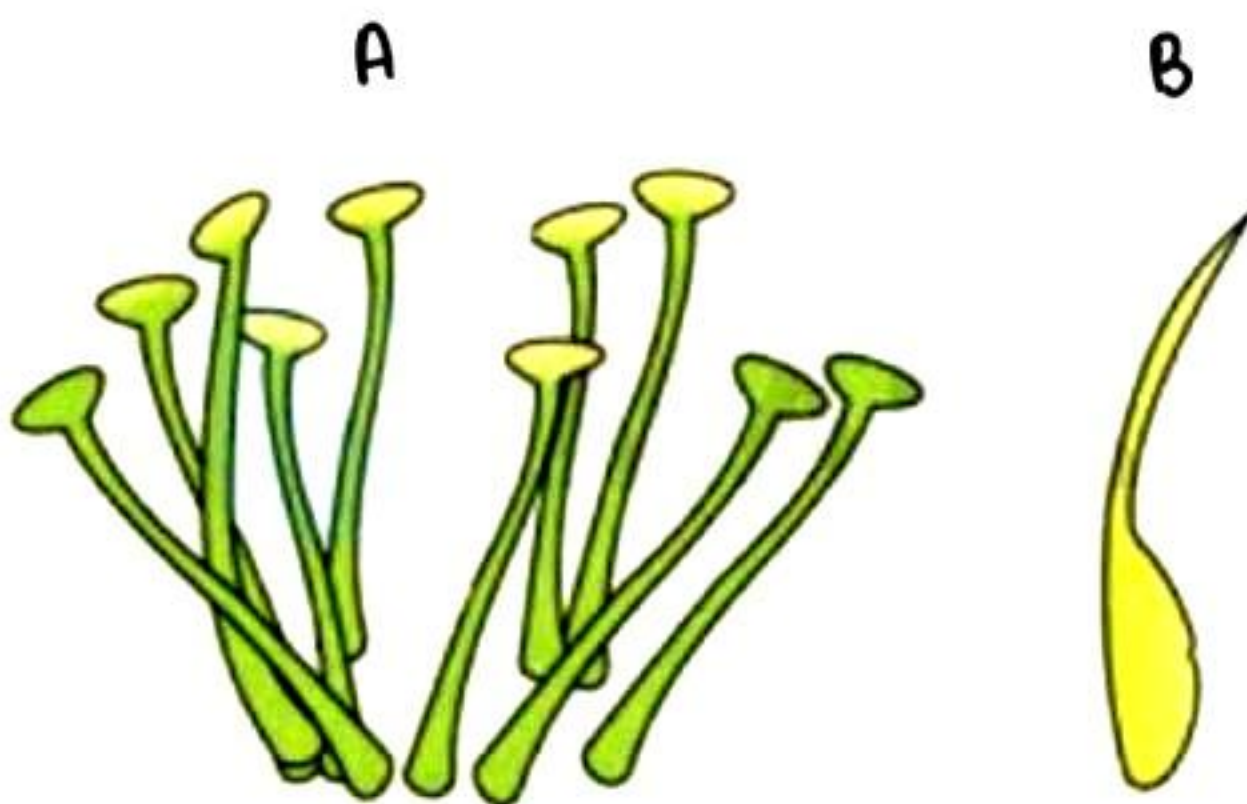
Q16. Select A and from the following diagram



- A. Calyx and Corolla
- B. Corolla and Calyx
- C. Androecium and Gynoecium
- D. Gynoecium and Androecium

Ans. (A)

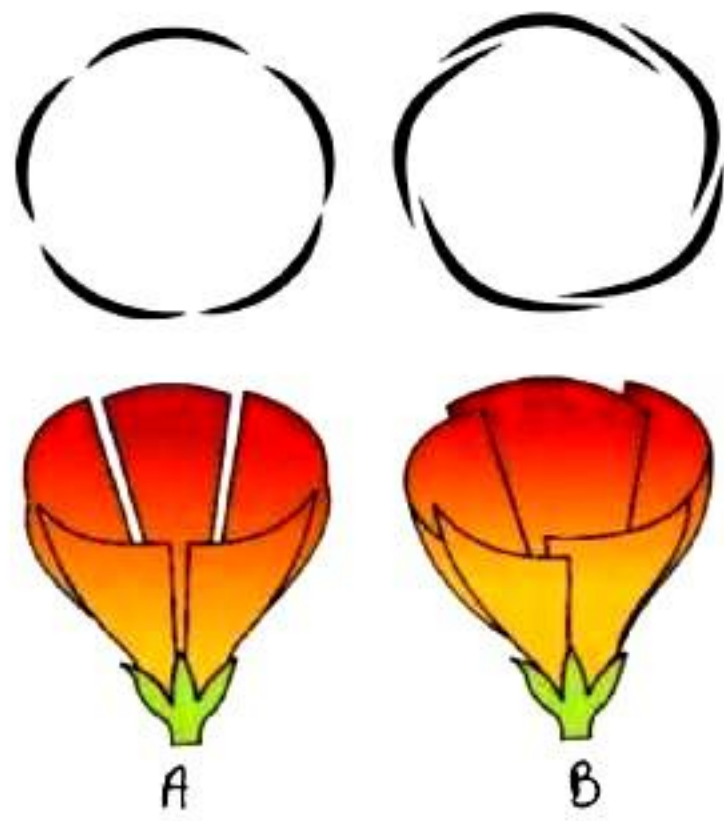
Q17. Select A and B from the following diagram



- A. Calyx and Corolla
- B. Corolla and Calyx
- C. Androecium and Gynoecium
- D. Gynoecium and Androecium

Ans. (C)

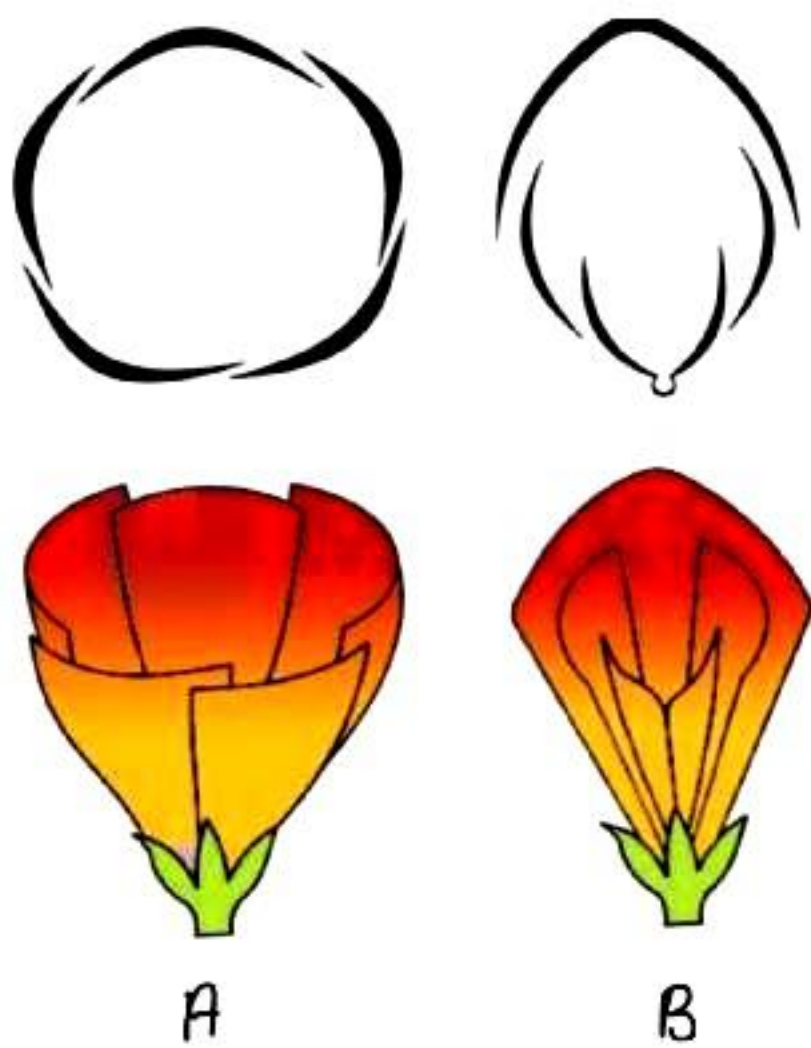
Q18. Select A and B from the following diagram



- A. Valvate and Twisted
- B. Twisted and Imbricate
- C. Imbricate and Vexillary
- D. Twisted and Vexillary

Ans. (A)

Q19. Select A and B from the following diagram

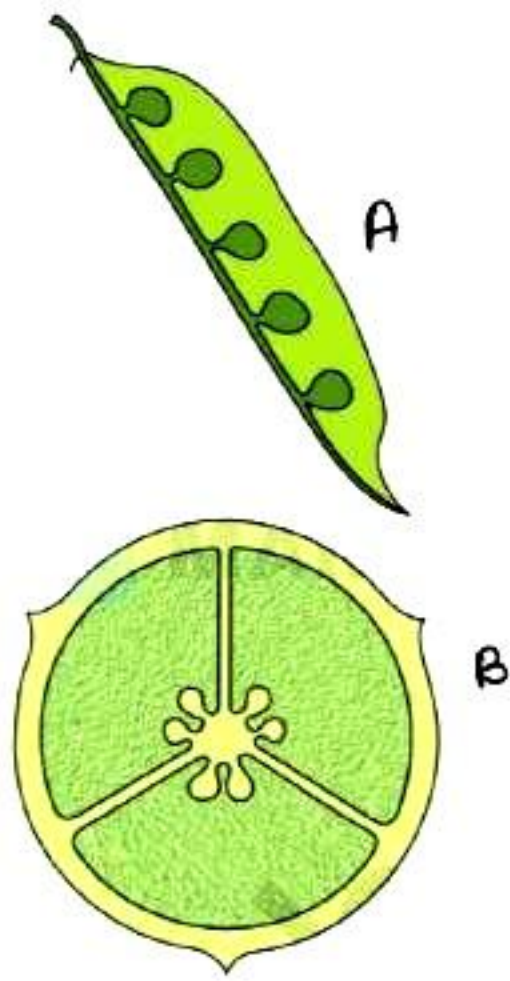


- A. Valvate and Twisted
- B. Twisted and Imbricate

- C. Imbricate and Vexillary
- D. Twisted and Vexillary

Ans. (C)

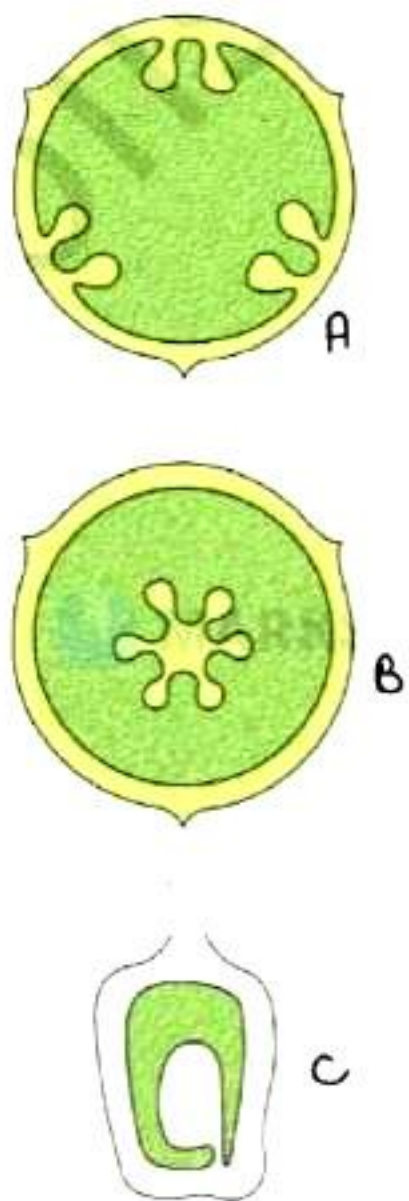
20. Select A and B from the following diagram



- A. Marginal and Axile
- B. Marginal and Parietal
- C. Marginal and Basal
- D. Marginal and Free central

Ans. (A)

21. Select A, B, C from the following diagram

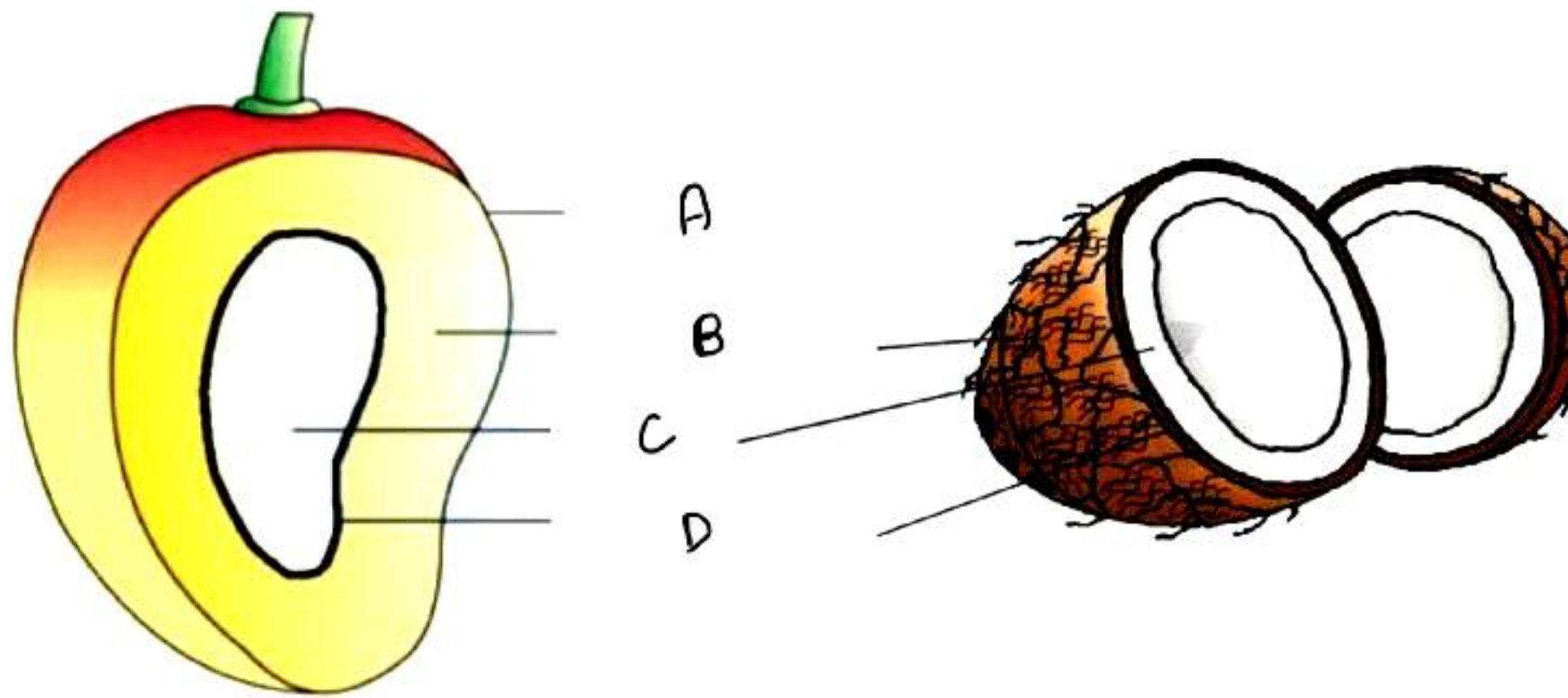


- A. Marginal, Axile, Parietal
- B. Parietal, Free central, Basal

- C. Free central, Basal, Parietal
- D. Basal, Parietal and Marginal

Ans. (C)

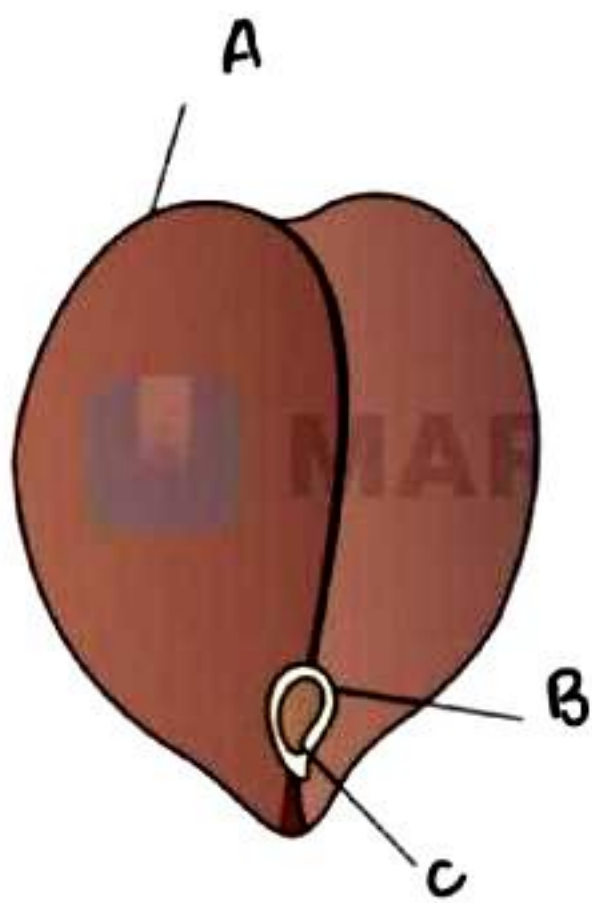
Q22. Select A, B, C, D from the following diagram



- A. Epicarp, Mesocarp, Endocarp, Seed
- B. Mesocarp, Endocarp, Seed, Epicarp
- C. Seed, Endocarp, Mesocarp, Endocarp
- D. Epicarp, Mesocarp, Seed, Endocarp

Ans. (D)

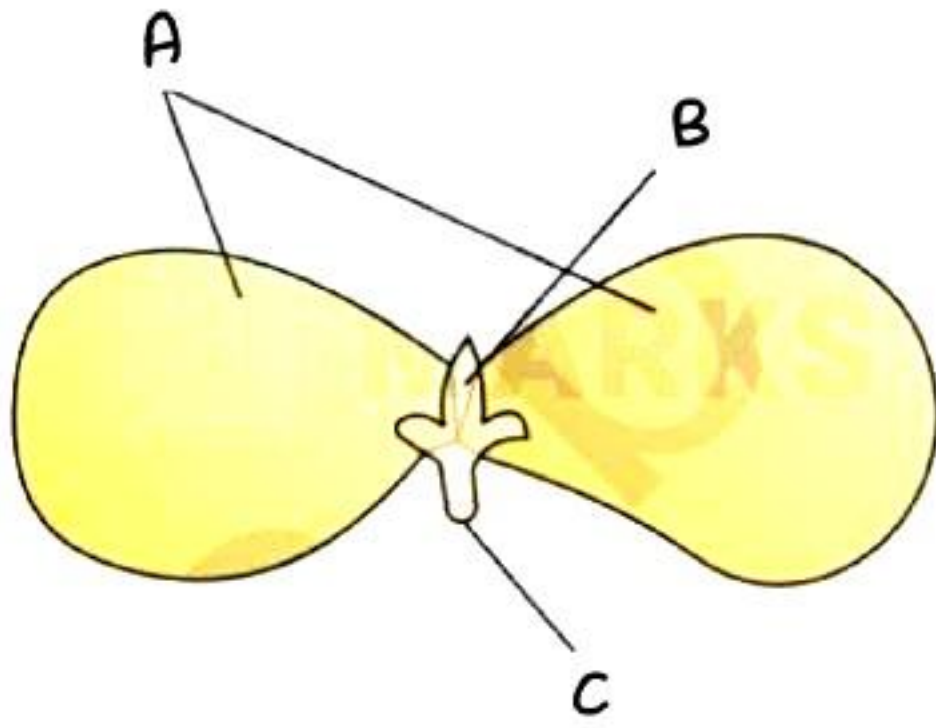
Q23. Select A, B, C from the following diagram



- A. Seed Coat, Hilum, Micropyle
- B. Micropyle, Seed coat, Hilum
- C. Micropore, Hilum, Seed coat
- D. Seed Coat, Hilum, Micropore

Ans. (D)

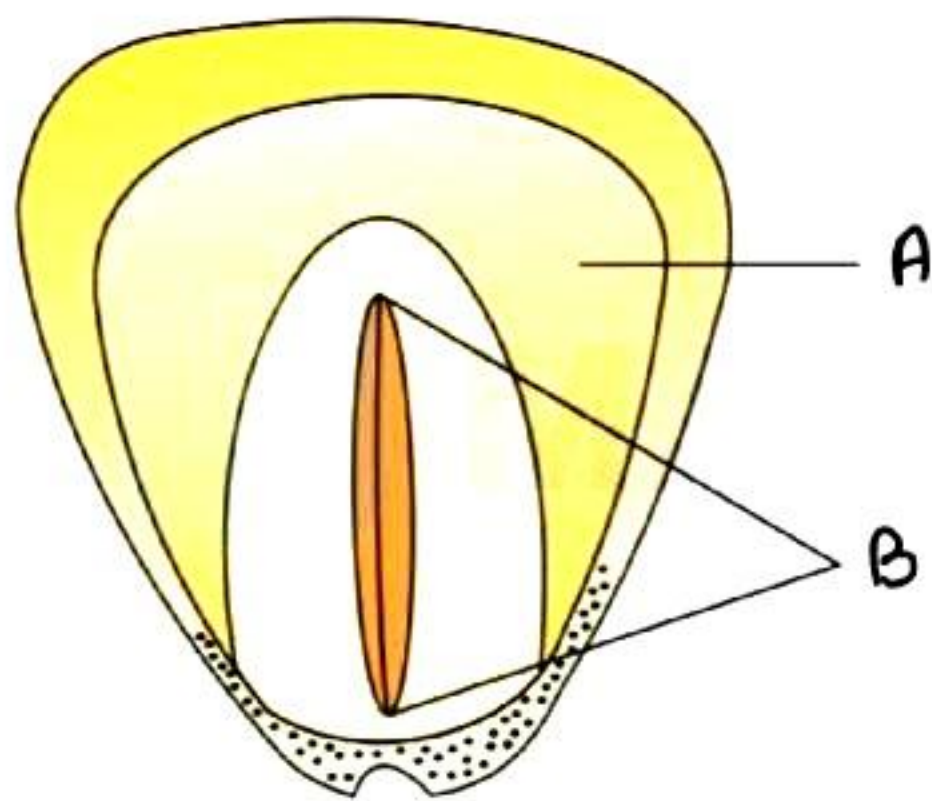
Q24. Select A, B, C from the following diagram



- A. Plumule, Cotyledons, radicle
- B. Radicle, Cotyledons, Plumule
- C. Seed Coat, Cotyledons, Plumule
- D. Cotyledon, Plumule, radicle

Ans. (D)

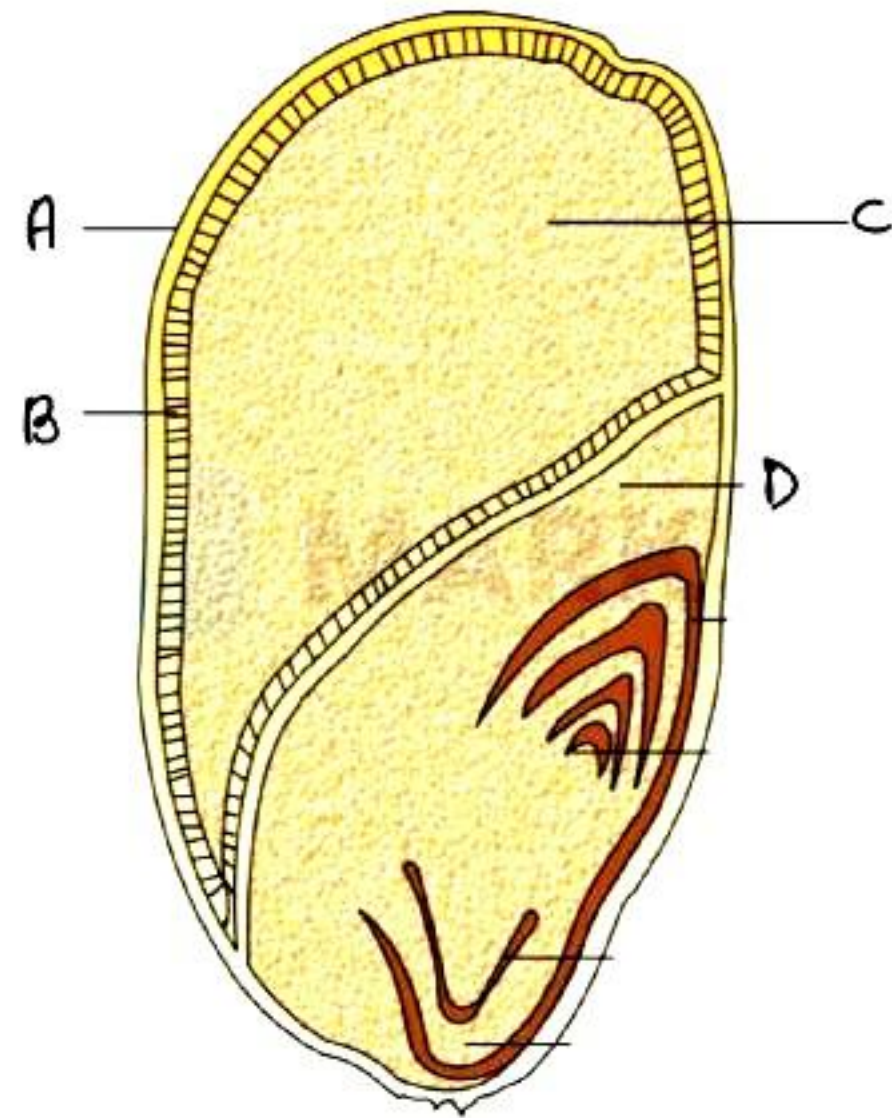
Q25. Select A, B from the following diagram



- A. Endocarp and Ovule
- B. Endosperm and Ovule
- C. Embryo and Endocarp
- D. Endosperm and Embryo

Ans. (D)

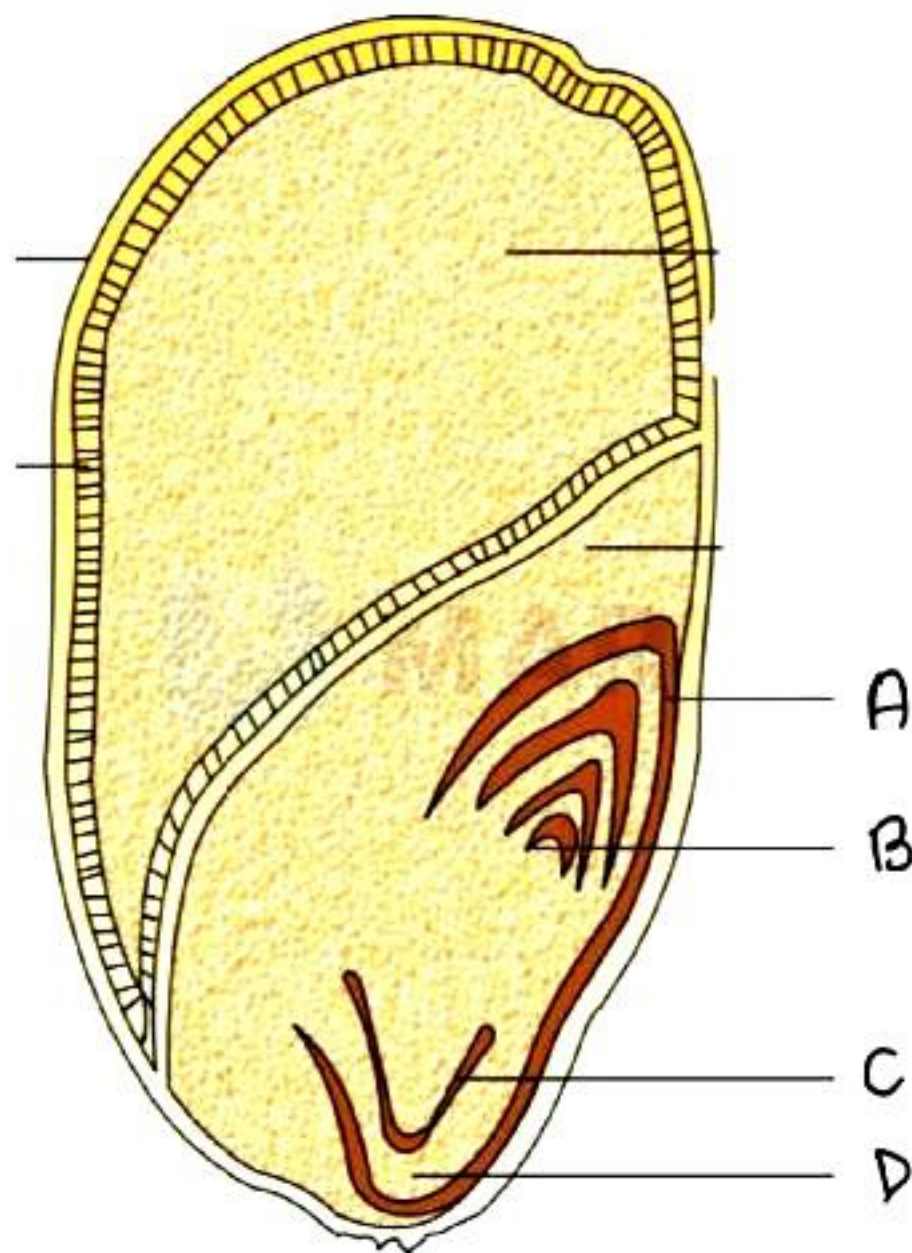
Q26. Select A, B, C, D from the following diagram



- A. Seed Coat, Aleurone layer, Endocarp, Scutellum
- B. Seed Coat, Aleurone layer, Endocarp, Plumule
- C. Seed Coat, Aleurone layer, Endosperm, Scutellum
- D. Seed Coat, Aleurone layer, Endosperm, Radicle

Ans. (C)

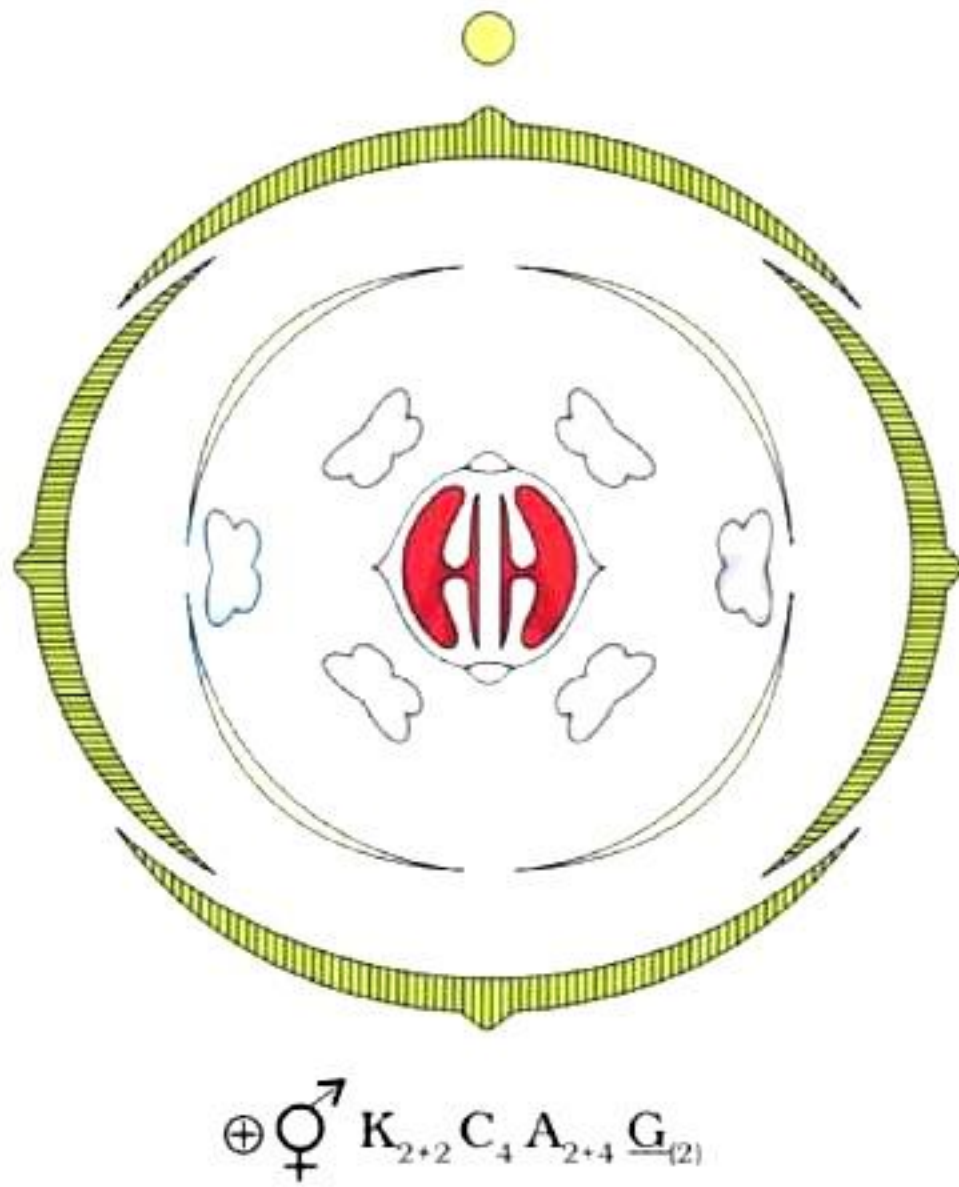
Q27. Select A, B, C, D from the following diagram



- A. Coleoptile, Plumule, Radicle, Coleorhiza
- B. Plumule, Radicle, Coleorhiza, Coleoptile
- C. Coleoptile, Plumule, Radicle, Scutellum
- D. Embryo, Plumule, Radicle, Coleorhiza

Ans. (A)

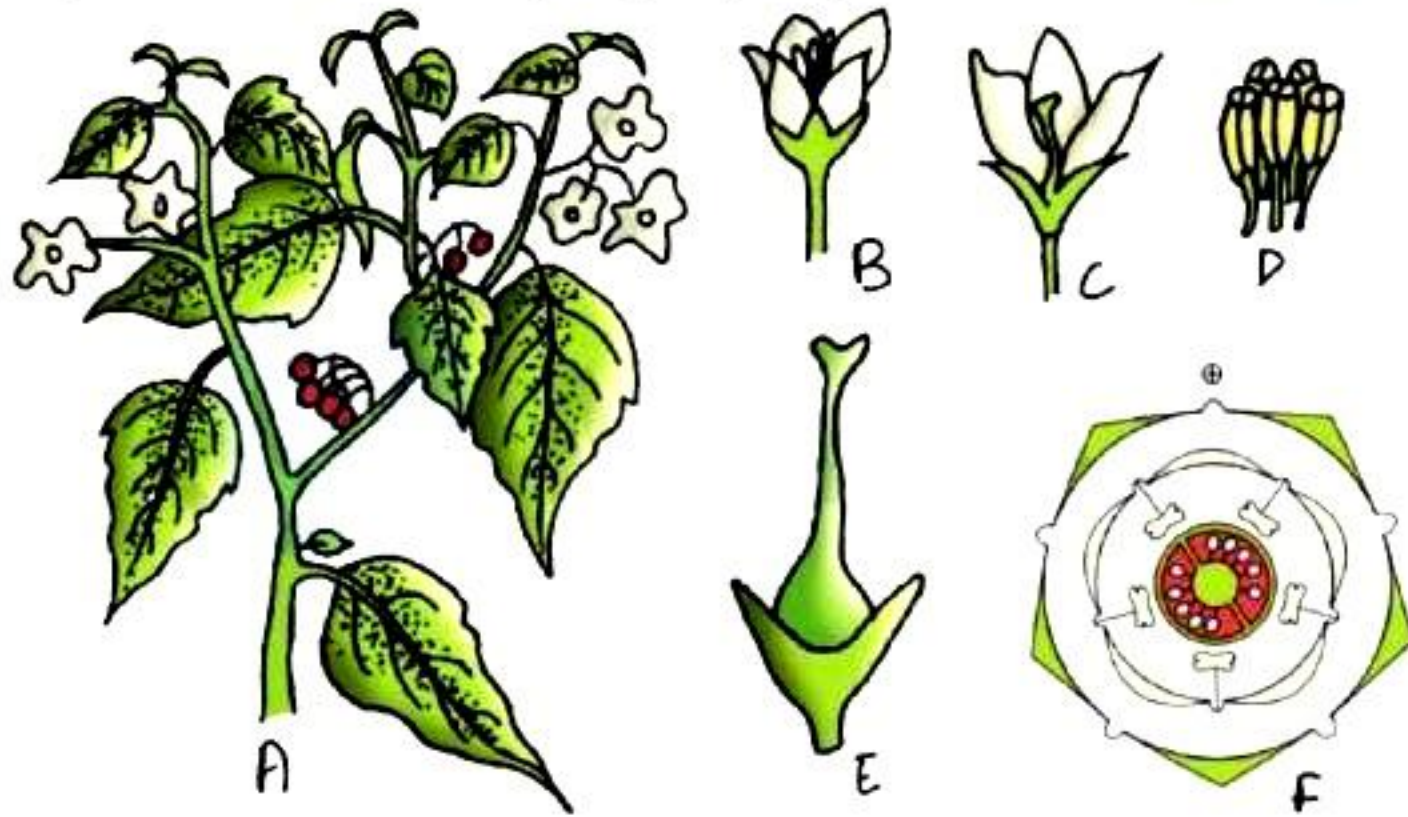
Q28. Identify the diagram



- A. Seed diagram
- B. Floral Diagram
- C. Flower Diagram
- D. None

Ans. (B)

Q29. Select A, B, C, D, E and F from the following diagram



- A. Twig, Flower, TS of Flower, Stamens, Carpel, seed diagram
- B. Twig, Flower, TS of Flower, Stamens, Carpel, flower diagram
- C. Twig, Flower, LS of Flower, Stamens, Carpel, seed diagram
- D. Twig, Flower, TS of Flower, Stamens, Carpel, floral diagram

Ans. (D)